

## 1 需要安装的软件

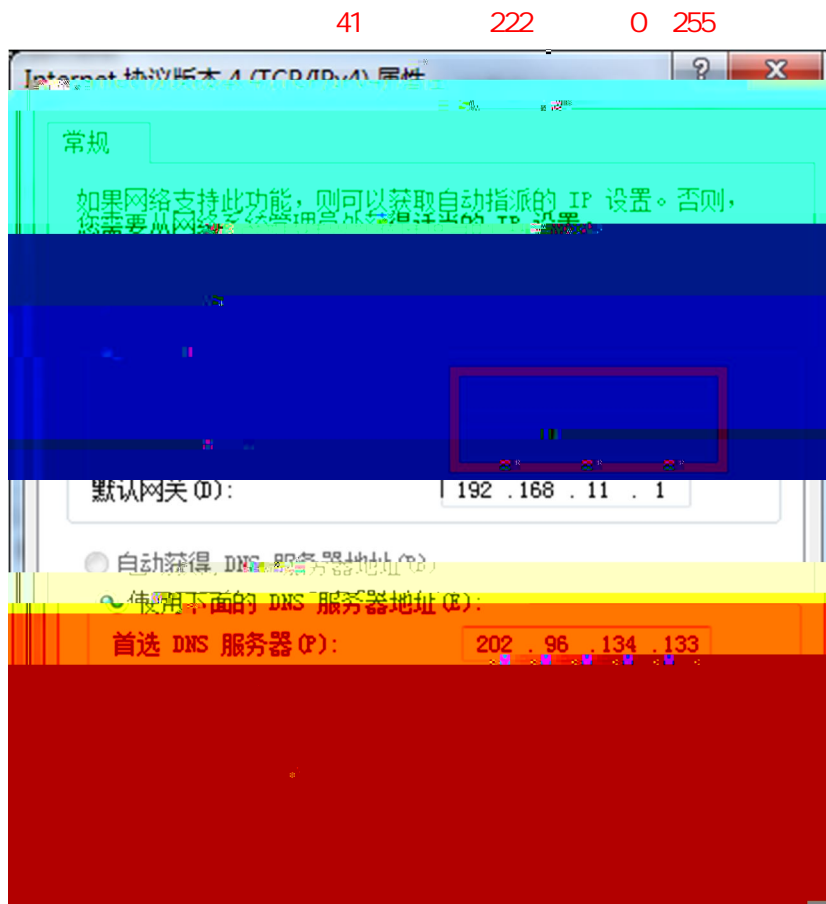
- 1.1 X\_Builder XBuilderFor
- 1.2 VSPE
- 1.3 Modbus Poll



## 2 需要用到的程序

- 21 PLC MC200-WEN \ \MC200 PLC
- 22 MC200-WEN \ \
- 23 MC200-WEN \ \MODBUSPULL Modbus Pull

## 3 测试环境设置（电脑本地链接属性设置）



## 4 测试步骤

4.1

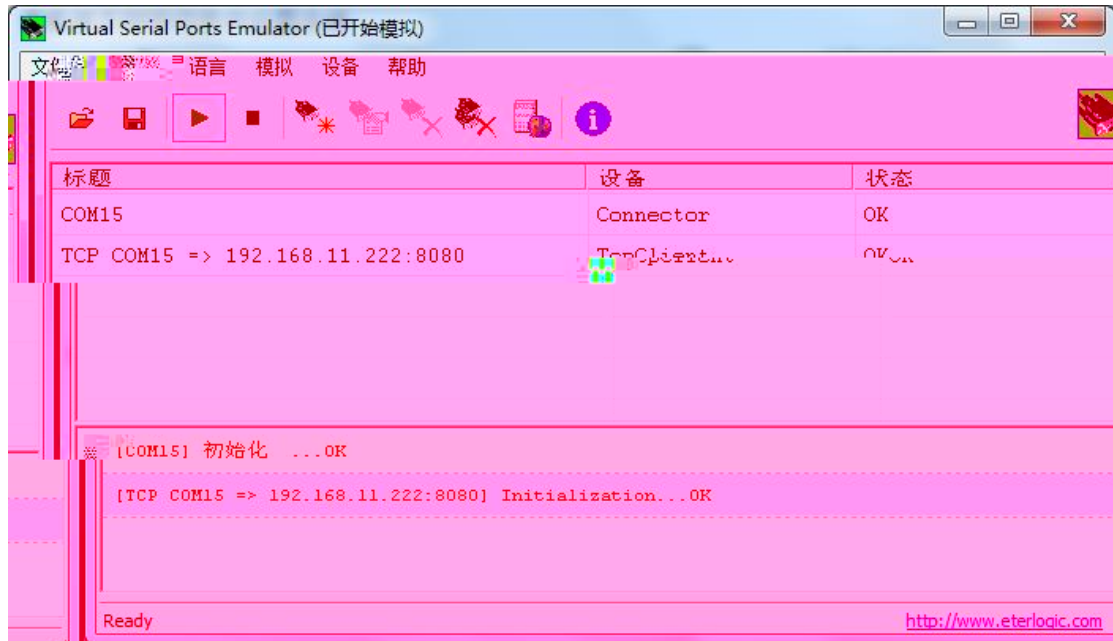
4.2 WEN WEN Ethernet

4.3 PLC 1

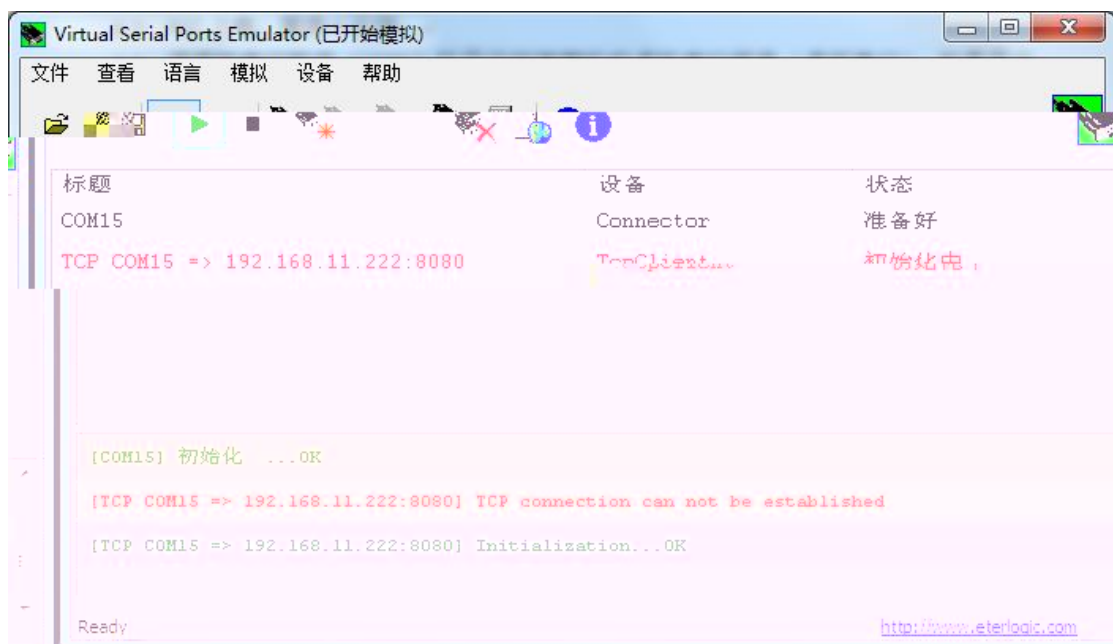
4.4 VSPE MC200-WEN \

OK 4.4.1

4.4.2



4.4.1



4.4.2

4.4.1

4.4.2

PLC

1

4.4.3

6s

4.4.2

4.4.4

4.5

4.5.1

Modbus poll

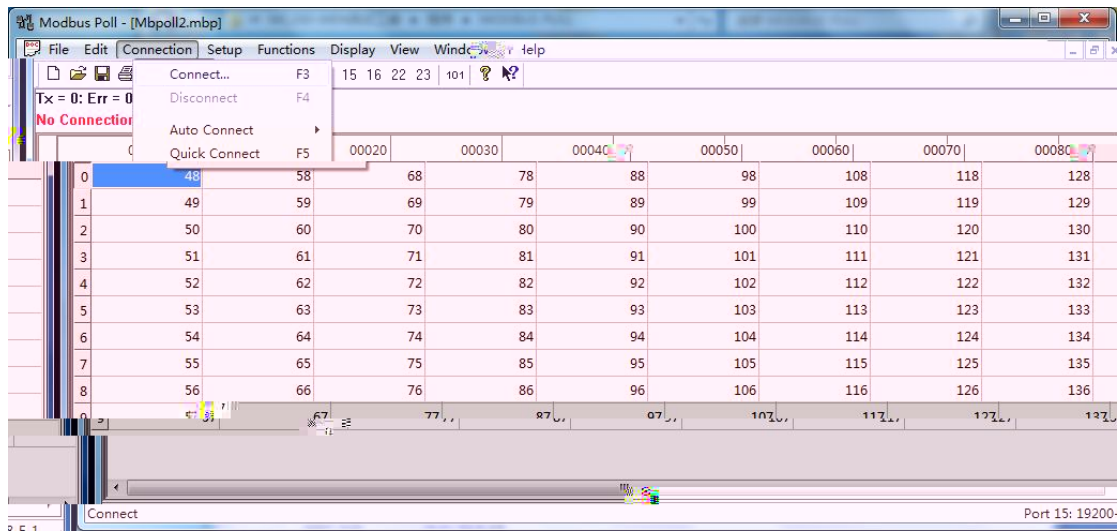
MC200-WEN

\ \MODBUS PULL

4.5.2

"connect..."

4.5.2.1

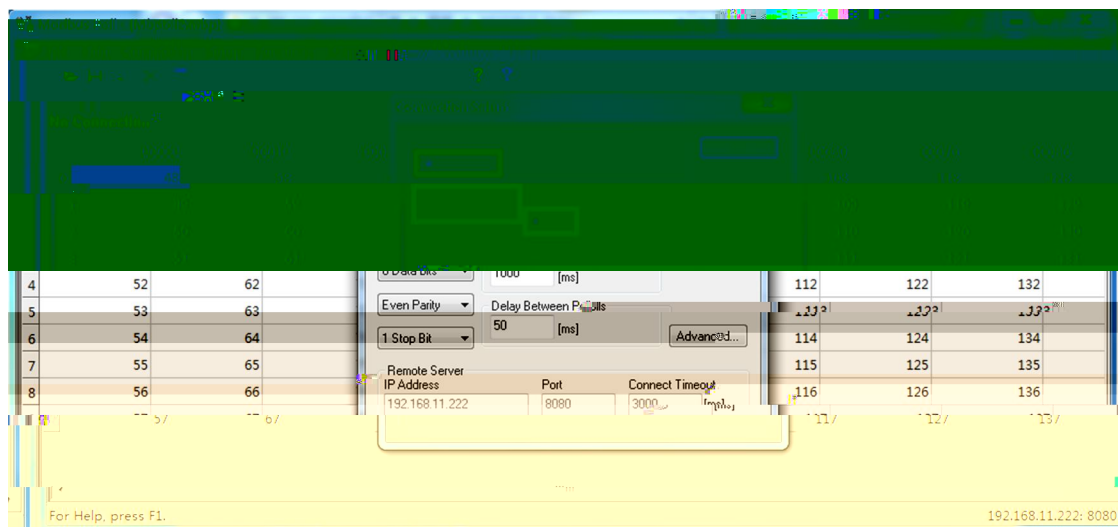


4.5.2.1

4.5.3

"OK"

4.5.3.1



4.5.4

PLC

PLC

4.5.4.1

	00000	00010	00020	00030	00040	00050	00060	00070	00080
0	80	90	100	110	120	130	140	150	160
1	81	91	101	111	121	131	141	151	161
2	82	92	102	112	122	132	142	152	162
3	83	93	103	113	123	133	143	153	163
4	84	94	104	114	124	134	144	154	164
5	85	95	105	115	125	135	145	155	165
6	86	96	106	116	126	136	146	156	166
7	87	97	107	117	127	137	147	157	167
8	88	98	108	118	128	138	148	158	168
9	89	99	109	119	129	139	149	159	169

4.5.4.1

4.5.5

4.5.5.1

4.4

	00000	00010	00020	00030	00040	00050	00060	00070	00080
0	29	39	49	59	69	79	89	99	
1	20	30	40	50	60	70	80	90	100
2	21	31	41	51	61	71	81	91	101
3	22	32	42	52	62	72	82	92	102
4	23	33	43	53	63	73	83	93	103
5	24	34	44	54	64	74	84	94	104
6	25	35	45	55	65	75	85	95	105
7	26	36	46	56	66	76	86	96	106
8	27	37	47	57	67	77	87	97	107
9	28	38	48	58	68	78	88	98	108

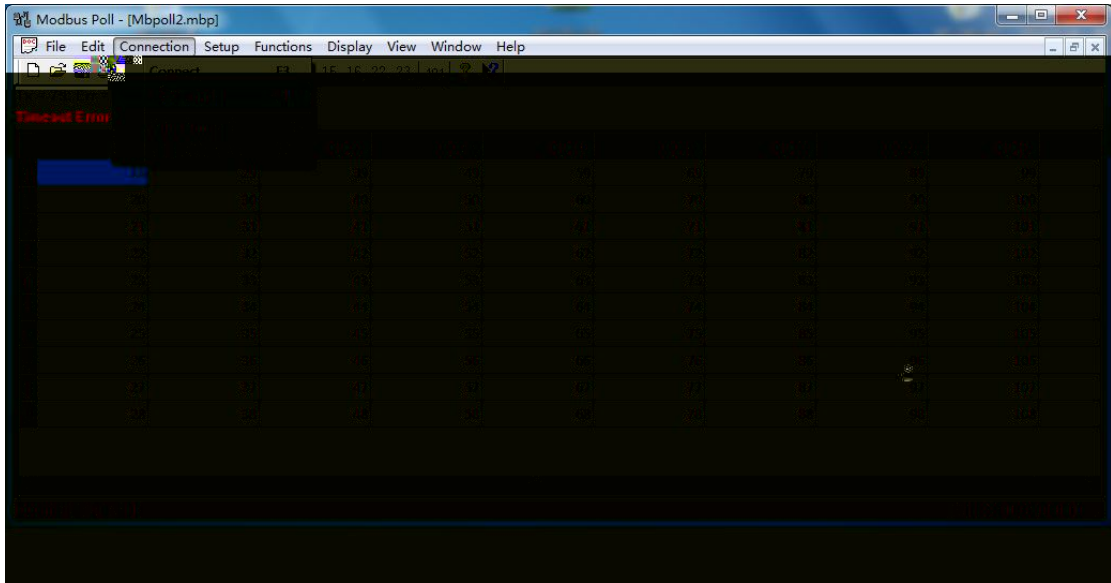
4.5.5.1

4.5.6

4.5.6.1

"Disconnect"

4.5.2 4.5.4



4.5.61